



SPRINGFIELD
ESTATE



EXTRAORDINARY LIVING AWAITS IN GEORGE'S PREMIER LIFESTYLE ESTATE



Luxury living from R4,3-million

VAT included, NO Transfer Duty





Welcome to Springfield

Located in the heart of South Africa's iconic Garden Route, Springfield Estate is a beautifully appointed for the discerning buyer, set against the breathtaking backdrop of the Outeniqua Mountains.

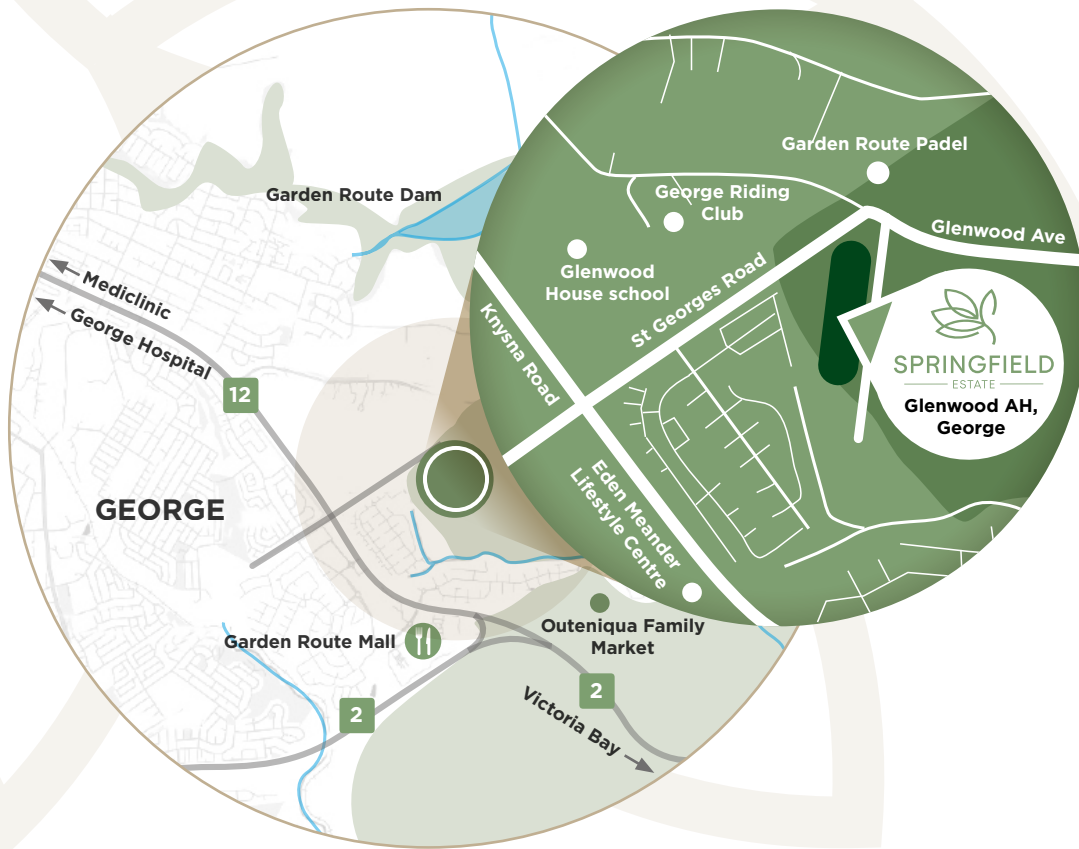
This exclusive 16-hectare lifestyle estate offers a selection of stylish modern homes, thoughtfully designed in a contemporary Cape Vernacular idiom, by one of South Africa's leading architectural practices. As a resident, you and your family will enjoy a range of resort-level amenities, including a heated swimming pool and a spacious, welcoming clubhouse. Springfield is fast becoming one of the most desirable addresses in George!



CLUB HOUSE



BOULEVARD



Perfectly Positioned

Strategically situated Springfield Estate offers an unparalleled lifestyle in George, with effortless access to shopping malls, excellent local schools, first-class medical facilities, pristine beaches, numerous golf courses, the N2 highway and George Airport.

Connected to the Outdoors

Discover the Garden Route's stunning hiking and mountain bike trails. This iconic outdoor paradise offers adventurers countless ways to connect with nature. Within a 50km radius, you'll find fourteen world-class golf courses, including the prestigious Fancourt Golf Estate and the breathtaking Simola Golf & Country Estate. Explore Vic Bay, Wilderness and Herolds Bay, beautiful beaches right on your doorstep.



Exquisite Finishes

CRAFTED AND TAILORED TO SUIT YOUR TASTE

Springfield Estate caters to diverse personalities and styles. With meticulous attention to detail, and top-quality materials and fittings throughout, the estate presents three distinct interior mood options:

- Spring • Summer • Autumn

Choose the colour scheme that resonates with your personal sense of style.



Live Securely, Live Freely

EXPERIENCE PEACE OF MIND

Every home in Springfield Estate offers an unobtrusive but uncompromising level of security,

security features include:

- 24-hour security presence
- Biometric Access
- Visitor access management
- CCTV perimeter surveillance
- Electrified perimeter fencing







Two Bedroom Homes

Discover the epitome of modern living at Springfield Estate, where our beautifully designed single-storey, two-bedroom homes redefine comfort and style. Ideal for couples and small families, these residences seamlessly blend contemporary sophistication with practicality, offering a sanctuary you'll be proud to call home.





Type D

SINGLE STOREY HOME

Priced from R4,290,000 million

| | |
|-----------|-------------------|
| Size from | 175m ² |
| Bedrooms | 2 |
| Bathrooms | 2 |
| Garages | 2 |



Scan with your phone
to view the Price List





Three Bedroom Homes

Our three-bedroom homes are both elegant and functional, offering a harmonious blend of spacious interiors and scenic surroundings. Each meticulously crafted residence boasts contemporary design elements, including open-plan living areas and sleek kitchens equipped with engineered stone tops and Bosch appliances.





FRONT

HOME TYPE C | 3 BEDROOM



Type C

SINGLE STOREY HOME

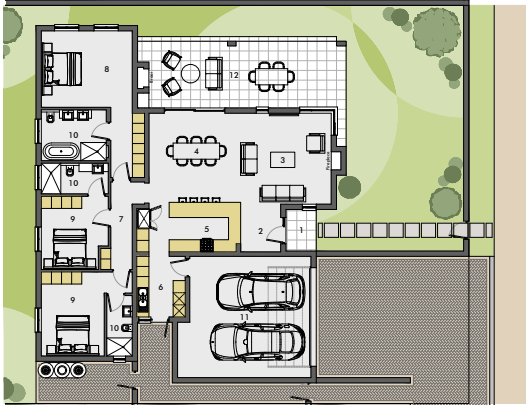
Priced from R4,790,000 million

| | |
|-----------|-------------------|
| Size from | 185m ² |
| Bedrooms | 3 |
| Bathrooms | 2 |
| Garages | 2 |



Scan with your phone
to view the Price List





Type J

SINGLE STOREY HOME

Priced from R5,790,000 million

| | |
|-----------|-------------------|
| Size from | 226m ² |
| Bedrooms | 3 |
| Bathrooms | 3 |
| Garages | 2 |

Scan with your phone
to view the Price List



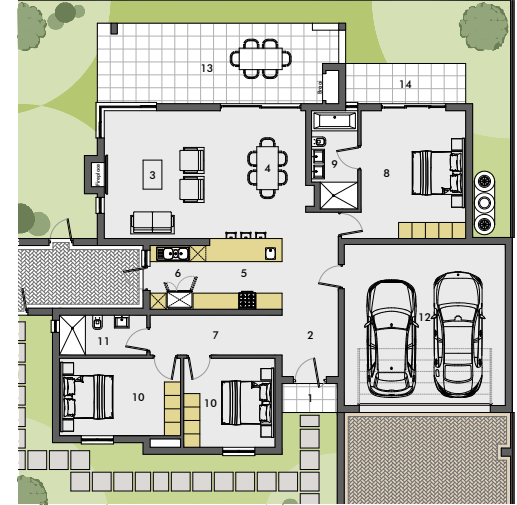
Type J2

SINGLE STOREY HOME

Priced from R5,890,000 million

| | |
|-----------|-------------------|
| Size from | 240m ² |
| Bedrooms | 3 |
| Bathrooms | 3 |
| Garages | 2 |

Scan with your phone
to view the Price List



Type K

SINGLE STOREY HOME

Priced from R5,590,000 million

| | |
|-----------|-------------------|
| Size from | 223m ² |
| Bedrooms | 3 |
| Bathrooms | 3 |
| Garages | 2 |

Scan with your phone
to view the Price List





Four Bedroom Homes - on request

This beautiful four-bedroom family home offers exceptional space and privacy. Thoughtfully designed interiors and generous outdoor areas create a calm, elegant setting for modern family life.

Experience effortless living where style and tranquillity meet.





Type G

SINGLE STOREY HOME

Priced from R7,950,000 million

| | |
|---------------|-------------------|
| Size from | 296m ² |
| Bedrooms | 4 |
| Bathrooms | 3.5 |
| Garages | 2 |
| Erf size from | 679sq.m |



Scan with your phone
to view the Price List



REFINED LIVING FOR
DISCERNING BUYERS



Contact

Tracey Rodrigues

060 555 9770

info@springfieldestates.co.za

www.springfieldestates.co.za

[instagram.com/springfield_estate_](https://www.instagram.com/springfield_estate_george)
[george](https://www.instagram.com/springfield_estate_george)

[facebook.com/springfieldestates-](https://www.facebook.com/springfieldestates-)

Brought to you by

VANTAGE
PROPERTY

SPRINGFIELD
ESTATE

All computer-generated artist's impressions of Springfield Estate are indicative only and should not be regarded as literal representations of the finished development.